

**BALDOR® • RELIANCE** 

**Product Information Packet**

**ZDNM3767T**

**5HP,1770RPM,3PH,60HZ,213TC,0734M,TENV,F1**

Part Detail							
Revision:	M	Status:	PRD/A	Change #:		Proprietary:	No
Type:	AC	Elec. Spec:	07WGW744	CD Diagram:	CD0005	Mfg Plant:	
Mech. Spec:	07J134	Layout:	07LYJ134	Poles:	04	Created Date:	
Base:	RG	Eff. Date:	07-11-2019	Leads:	9#14		

Specs			
Catalog Number:	ZDNM3767T	Insulation Class:	H
Enclosure:	TENV	Inverter Code:	Inverter Duty
Frame:	213TC	KVA Code:	J
Frame Material:	Iron	Lifting Lugs:	Standard Lifting Lugs
Output @ Frequency:	5.000 HP @ 60 HZ	Locked Bearing Indicator:	Locked Bearing
Synchronous Speed @ Frequency:	1800 RPM @ 60 HZ	Motor Lead Quantity/Wire Size:	9 @ 14 AWG
Voltage @ Frequency:	230.0 V @ 60 HZ	Motor Lead Exit:	Ko Box
	460.0 V @ 60 HZ	Motor Lead Termination:	Flying Leads
XP Class and Group:	None	Motor Type:	0734M
XP Division:	Not Applicable	Mounting Arrangement:	F1
Agency Approvals:	UR	Power Factor:	77
	CSA	Product Family:	General Purpose
Auxillary Box:	No Auxillary Box	Pulley End Bearing Type:	Ball
Auxillary Box Lead Termination:	None	Pulley Face Code:	C-Face
Base Indicator:	Rigid	Pulley Shaft Indicator:	Standard
Bearing Grease Type:	Polyrex EM (-20F +300F)	Rodent Screen:	None
Blower:	None	Shaft Extension Location:	Pulley End
Current @ Voltage:	13.400 A @ 230.0 V	Shaft Ground Indicator:	No Shaft Grounding

	6.700 A @ 460.0 V	<b>Shaft Rotation:</b>	Reversible
<b>Design Code:</b>	B	<b>Shaft Slinger Indicator:</b>	No Slinger
<b>Drip Cover:</b>	No Drip Cover	<b>Speed Code:</b>	Single Speed
<b>Duty Rating:</b>	CONT	<b>Motor Standards:</b>	NEMA
<b>Electrically Isolated Bearing:</b>	Not Electrically Isolated	<b>Starting Method:</b>	Direct on line
<b>Feedback Device:</b>	ENCODER	<b>Thermal Device - Bearing:</b>	None
<b>Front Face Code:</b>	Encoder/Feedback Device	<b>Thermal Device - Winding:</b>	Normally Closed Thermostat
<b>Front Shaft Indicator:</b>	None	<b>Vibration Sensor Indicator:</b>	No Vibration Sensor
<b>Heater Indicator:</b>	No Heater	<b>Winding Thermal 1:</b>	None
		<b>Winding Thermal 2:</b>	None

Nameplate NP1167L	
CAT NO	ZDNM3767T
SPEC.	07J134W744Z1
FRAME	213TC HP 5 TE
VOLTS	230/460
MAG CUR	7/3.5 FLA 13.4/6.7
RPM	1770 RPM MAX 6000
HZ	60 PH 3 CLASS H
SER.F.	1.00 DES B SL HZ 0.83
NEMA-NOM-EFF	91 WK2 0.84
BLWR V	PH HZ A
RATING	40C AMB-CONT
DE BRG	6307 ODE BRG 6206
CC	010A SN

Parts List		
Part Number	Description	Quantity
SA088483	SA 07J134W744Z1	1.000 EA
RA081393	RA 07J134W744Z1	1.000 EA
HW3201A05	3/8-16 EYEBOLT	1.000 EA
09CB3002SP	CB W/1.38 LEAD HOLE FOR 37, 39, 307 & 30	1.000 EA
09GS1000SP	GASKET-CONDUIT BOX, 1/16 THICK LEXIDE	1.000 EA
51XW2520A12	.25-20 X .75, TAPTITE II, HEX WSHR SLTD	2.000 EA
59XW2520G07	.25-20X.44,HEX SER WSHR,TAPTITE 2,GREEN	1.000 EA
37EP1100B86	FRONT TENV 206 BRG W/ GRSR & THRU-SH ENC	1.000 EA
HW4500A01	1641B(ALEMITE)400 UNIV, GREASE FITT	1.000 EA
HW5100A06	W2420-025 WVY WSHR (WB)	1.000 EA
37PE1300A01	PU ENDPLATE ASSEMBLY FOR ROUTING	1.000 EA
HW4500A01	1641B(ALEMITE)400 UNIV, GREASE FITT	1.000 EA
10XN2520A30	HEX HD CAP SCREW-STD THD-.25 X 20 THD PE	4.000 EA
HW1001A25	LOCKWASHER 1/4, ZINC PLT .493 OD, .255 I	4.000 EA
XY3118A12	5/16-18 HEX NUT DIRECTIONAL SERRATION	4.000 EA
10XN2520A08	1/4-20X1/2 HEX HEAD CAP	2.000 EA
35FH4801G	THRU-SHAFT ENCODER COVER INV/VECTOR F1 &	1.000 EA
10XN2520A08	1/4-20X1/2 HEX HEAD CAP	4.000 EA
09CB3501SP	CONDUIT BOX LID FOR 09CB3001 & 09CB3002	1.000 EA
09GS1013SP	09 GS FOR 09CB3501 LID - LEXIDE	1.000 EA
51XW2520A12	.25-20 X .75, TAPTITE II, HEX WSHR SLTD	2.000 EA
HA1005A22	SLINGER, OD 2.00, ID 1.14, 206 BRG, GM	1.000 EA
HW2501F21	KEY, 5/16 SQ X 2.375	1.000 EA
HA7000A02	KEY RETAINER RING, 1 1/8 DIA, 1 3/8 DIA	1.000 EA

<b>Parts List (continued)</b>		
<b>Part Number</b>	<b>Description</b>	<b>Quantity</b>
MJ5004A05	#242-21 LOCTITE GENERAL PURPOSE MED. STR	0.005 EA
85XU0407S04	4X1/4 U DRIVE PIN STAINLESS	2.000 EA
LB1115N	LABEL,LIFTING DEVICE (ON ROLLS)	1.000 EA
MJ1000A02	GREASE, MOBIL POLYREX EM - 124047	0.050 LB
OE5011A05SP	HS25 ENCODER ASSY - TENV	1.000 EA
MG1000G27	MED CHARCOAL METALLIC GREY 400-0096	0.036 GA
HA3104A32T	THRUBOLT .31-18 X 12.750 W/SHRINK TUBING	4.000 EA
LB1119N	WARNING LABEL	1.000 EA
LC0145B01	CONNECTION LABEL	1.000 EA
NP1167L	SS VEC UL CSA CC	1.000 EA
07PA1011	PKG GRP, 07 CAST IRON PK1181	1.000 EA
10XL3808A28	3/8 X 1 3/4" LAG SCREW	2.000 EA
MN416A01	TAG-INSTAL-MAINT no wire (1200/bx) 3/19	1.000 EA



**AC Induction Motor Performance Data**

Record # 32621

Typical performance - not guaranteed values

<b>Winding:</b> 07WGW744	<b>Type:</b> 0734M	<b>Enclosure:</b> TENV
--------------------------	--------------------	------------------------

Nameplate Data			General Characteristics at 460 V, 60 Hz: High Volt Connection		
Rated Output (HP)	5		Full Load Torque	15 LB-FT	
Volts	230/460		Start Configuration	DOL	
Full Load Amps	13.4/6.7		Break Down Torque	49 LB-FT	
R.P.M.	1770		Pull-Up Torque	19 LB-FT	
Hz	60	Phase	Locked-rotor Torque	27 LB-FT	
NEMA Design Code	B	KVA Code	Starting Current	49 Amps	
Service Factor	1		No-load Current	3.5 Amps	
NEMA Nom. Eff.	91	P.F.	Line-line Res. @ 25°C.	1.62 Ohms	
Rating - Duty	40C AMB-CONT		Temp. Rise @ Rated Load	66°C	
S.F. Amps			Temp. Rise @ S.F. Load		

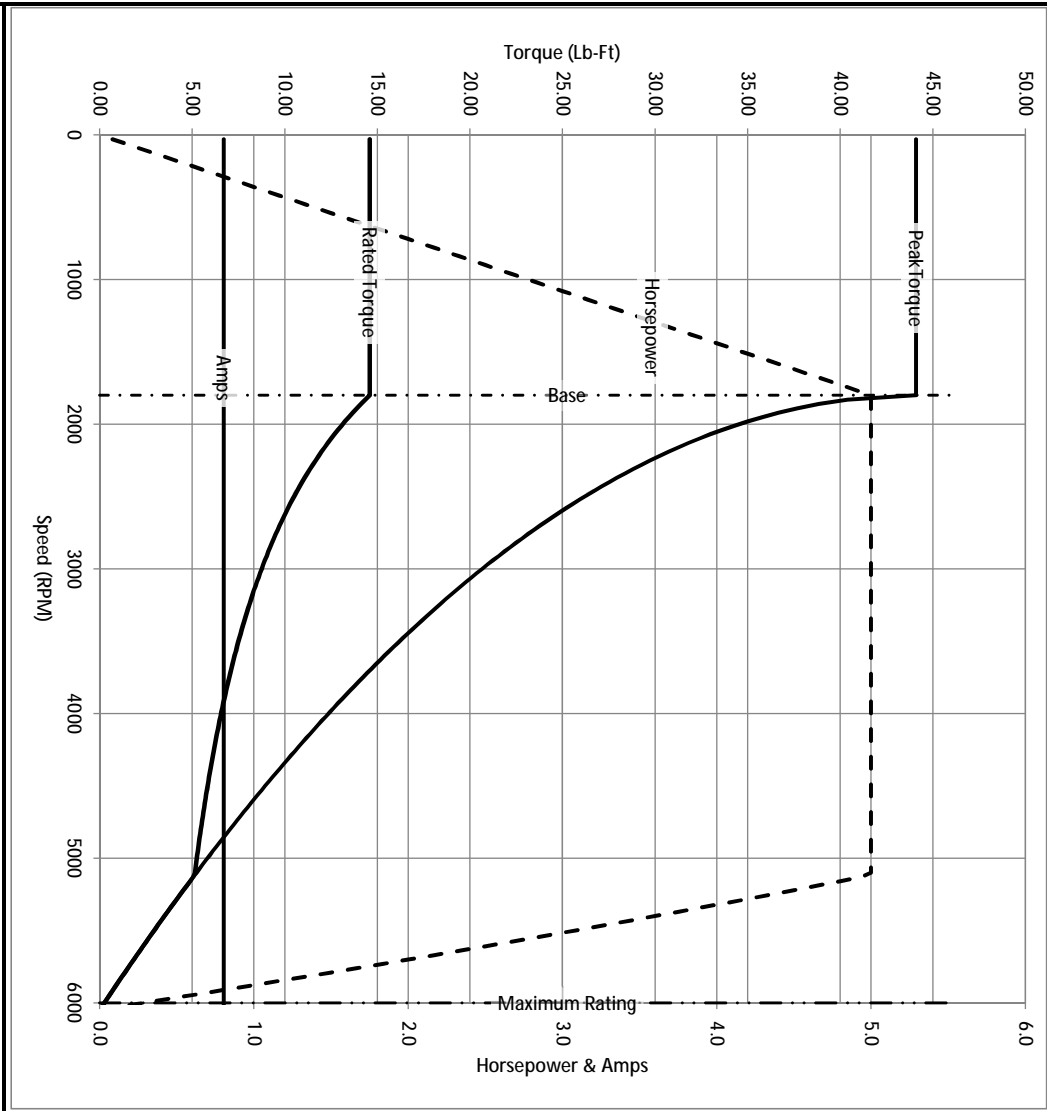
Load Characteristics at 460 Volts, 60 Hz, 5 HP

% of Rated Load	25	50	75	100	125	150	S.F.
Power Factor	37	58	70	77	80	82	
Efficiency	85.4	90.8	92.1	92.1	91.7	91	
Speed	1793	1788	1781	1774	1767	1759	
Line Amperes	3.7	4.5	5.4	6.7	8	9.4	

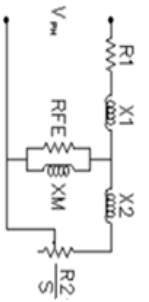
Baldor Electric Company Fort Smith, Arkansas



Catalog	ZDNM3767T	NIP VOLTS	230/460	ENCLOSURE	TENV	WYE CONNECTION OHMS PER PHASE (BASE RATING, 200°)			
FRAME	213TC	NIP AMPS	13.4/6.7	Base Volts	460	R1	0.810	X1	3.069
HP	5 HP	DUTY	Cont	Base AMPS	6.7	R2	0.503	X2	2.978
BASE SPEED	1800	MAX SAFE RPM	6000	Slip Hz	0.87			XMI	72.451
PHASE/HZ	3/60	AMB <sup>6</sup> /C/INSUL	40/H	WK <sup>2</sup> (lb-ft <sup>2</sup> )	0.84				

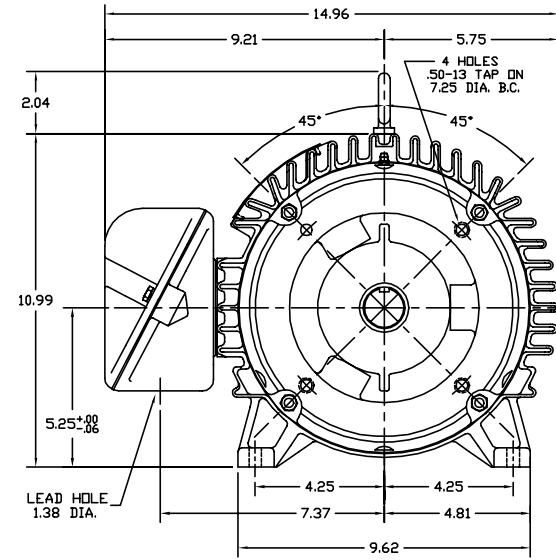
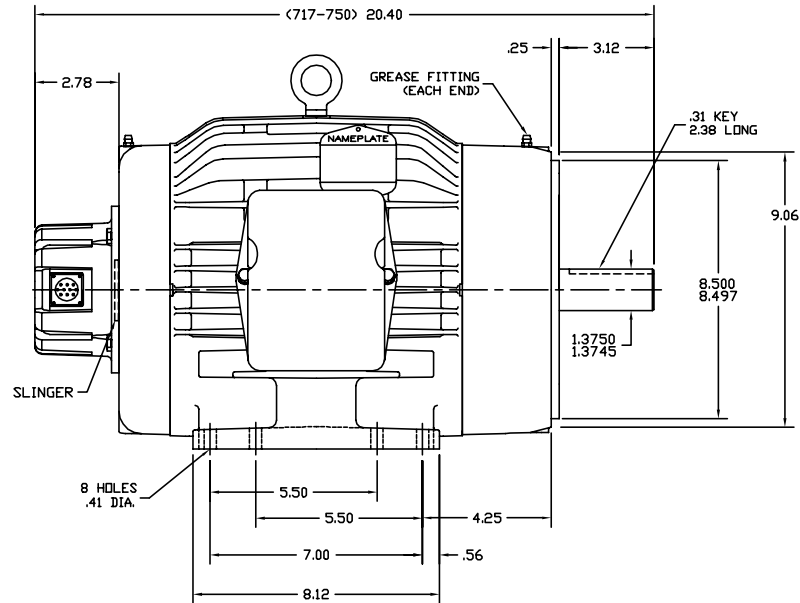


Remarks: Calculated Data



<p>A MEMBER OF THE ABB GROUP</p>	DR BY <u>ENR</u> CK BY APP BY DATE <u>2/27/2013</u>	A-C MOTOR PERFORMANCE CURVES	07J134W744Z1 ISSUE DATE <u>2/27/2013</u>
----------------------------------	--	---------------------------------	---

07LYJ134



CUSTOMER IS RESPONSIBLE FOR DETERMINING THAT MOTOR PERFORMANCE IS SUITABLE IN THE APPLICATION.

REV. DESC: CHANGED FRONT EP & SHAFT COVER			
REV. LTR: B	BY: BGM	REVISED: 14:01:34 01/04/2002	TDR: 259334
FILE: AAA00071000		REF: 07LYJ134	
MTL: -			

**BALDOR ELECTRIC Co.**

STD HDRZ 213-5TC TENV 307M VECTDR (THRU-SHAFT ENCODER)

07LYJ134

CD0005

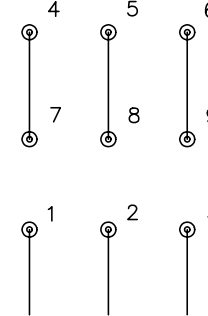


LOW VOLTAGE  
(2Y)



LINE

HIGH VOLTAGE  
(1Y)



LINE

NOTES:

1. INTERCHANGE ANY TWO LINE LEADS TO REVERSE ROTATION.
2. OPTIONAL THERMOSTATS ARE PROVIDED WHEN SPECIFIED.
3. ACTUAL NUMBER OF INTERNAL PARALLEL CIRCUITS MAY BE A MULTIPLE OF THOSE SHOWN ABOVE.
4. LEAD COLORS ARE OPTIONAL. LEADS MUST ALWAYS BE NUMBERED AS SHOWN.

REV. DESC: REVISE TO SHOW OPTIONAL COLORS			
REV. LTR: E	BY: JLP	REVISED: 01/19/99 10:15	TDR: 0171435
90000		FILE: AAA00005140	MDL: -
		MTL: -	

**BALDOR ELECTRIC Co.**

3PH, DV, 9 LEADS

CD0005